
8495D/K Attenuators

Operating and Service
Manual

Notice

The information contained in this document is subject to change without notice.

Agilent Technologies makes no warranty of any kind with regard to this material, including, but not limited to, the implied warranties of merchantability and fitness for a particular purpose. Agilent Technologies shall not be liable for errors contained herein or for incidental or consequential damages in connection with the furnishing, performance, or use of this material.

Agilent Technologies assumes no responsibility for the use or reliability of its software on equipment that is not furnished by Agilent Technologies.

This document contains proprietary information which is protected by copyright. All rights are reserved. No part of this document may be photocopied, reproduced, or translated to another language without prior written consent of Agilent Technologies.

RESTRICTED RIGHTS LEGEND

Use, duplication, or disclosure by the U.S. Government is subject to restrictions as set forth in subparagraph (c)(1)(ii) of the Rights in Technical Data and Computer Software clause at DFARS 252.227-7013 for DOD agencies, and subparagraphs (c)(1) and (c)(2) of the Commercial Computer Software Restricted Rights clause at FAR 52.227-19 for other agencies.

Agilent Technologies, Inc.
1400 Fountaingrove Parkway
Santa Rosa, CA 95403-1799, U.S.A.

© Copyright 2000–2001 Agilent Technologies, Inc.

What You'll Find In This Manual...

- “Instrument Definition” on page 1
- “Description” on page 2
- “Specifications” on page 6
- “Installation” on page 8
- “Operating Instructions” on page 9
- “Operator’s Check” on page 10
- “Replaceable Parts” on page 12

Warranty

Custom systems are warranted by contractual agreement between Agilent Technologies and the customer.

Certification

Agilent Technologies, Inc., certifies that this product met its published specifications at the time of shipment from the factory. Agilent Technologies further certifies that its calibration measurements are traceable to the United States National Institute of Standards and Technology (NIST, formerly NBS), to the extent allowed by the Institute's calibration facility, and to the calibration facilities of other International Standards Organization members.

Warranty

This Agilent Technologies system product is warranted against defects in materials and workmanship for a period corresponding to the individual warranty periods of its component products. Instruments are warranted for a period of one year. During the warranty period, Agilent Technologies will, at its option, either repair or replace products that prove to be defective.

Warranty service for products installed by Agilent Technologies and certain other products designated by Agilent Technologies will be performed at Buyer's facility at no charge within Agilent Technologies service travel areas. Outside Agilent Technologies service travel areas, warranty service will be performed at Buyer's facility only upon Agilent Technologies' prior agreement and Buyer shall pay Agilent Technologies' round trip travel expenses. In all other areas, products must be returned to a service facility designated by Agilent Technologies.

For products returned to Agilent Technologies for warranty service, Buyer shall prepay shipping charges to Agilent Technologies and Agilent Technologies shall pay shipping charges to return the product to Buyer. However, Buyer shall pay all shipping charges, duties, and taxes for products returned to Agilent Technologies from another country.

Agilent Technologies warrants that its software and firmware designated by Agilent Technologies for use with an instrument will execute its programming instructions when properly installed on that instrument. Agilent Technologies does not warrant that the operation of the instrument, or software, or firmware will be uninterrupted or error free.

LIMITATION OF WARRANTY. The foregoing warranty shall not apply to defects resulting from improper or inadequate maintenance by Buyer, Buyer-supplied software or interfacing, unauthorized modification or misuse, operation outside of the environmental specifications for the product, or improper site preparation or maintenance.

NO OTHER WARRANTY IS EXPRESSED OR IMPLIED. AGILENT TECHNOLOGIES SPECIFICALLY DISCLAIMS THE IMPLIED WARRANTIES OR MERCHANTABILITY AND FITNESS FOR A PARTICULAR PURPOSE.

EXCLUSIVE REMEDIES. THE REMEDIES PROVIDED HEREIN ARE BUYER'S SOLE AND EXCLUSIVE REMEDIES. AGILENT TECHNOLOGIES SHALL NOT BE LIABLE FOR ANY DIRECT, INDIRECT, SPECIAL, INCIDENTAL, OR CONSEQUENTIAL DAMAGES, WHETHER BASED ON CONTRACT, TORT, OR ANY OTHER LEGAL THEORY.

YEAR 2000. Agilent Technologies warrants that each Agilent Technologies hardware, software, and firmware product on Agilent Technologies' Corporate Price List (dated July 1, 1998 or later) delivered under the product's contract of sale will be able to accurately process date data (including, but not limited to, calculating, comparing, and sequencing) from, into, and between the twentieth and twenty-first centuries, and the years 1999 and 2000, including leap year calculations, when used in accordance with the product documentation provided that all other products (that is, hardware, software, firmware) used in combination with such Agilent Technologies product(s) properly exchange date data with it. If the agreement requires that specific Agilent Technologies products must perform as a system in accordance with the foregoing warranty, then that warranty will apply to those Agilent Technologies products as a system, and Customer retains sole responsibility to ensure the year 2000 readiness of its information technology and business environment. The duration of this warranty extends through January 31, 2001.

The remedies available under this warranty will be defined in, and subject to, the terms and limitations of the warranties contained in the contract of sale. To the extent permitted by local law, this warranty applies only to branded Agilent Technologies products and not to products manufacture by others that may be sold or distributed by Agilent Technologies. Nothing in this warranty will be construed to limit any rights or remedies provided elsewhere in the contract of sale with respect to matters other than year 2000 compliance.

Assistance

Product maintenance agreements and other customer assistance agreements are available for Agilent Technologies products.

For assistance, call your local Agilent Technologies Sales and Service Office (refer to [“Service and Support”](#) on page vi).

Service and Support

UNITED STATES		
Instrument Support Center Agilent Technologies (800) 403-0801		
EUROPEAN FIELD OPERATIONS		
Headquarters Agilent Technologies S.A. 150, Route du Nant-d'Avril 1217 Meyrin 2/ Geneva Switzerland (41 22) 780.8111	France Agilent Technologies France 1 Avenue Du Canada Zone D'Activite De Courtaboeuf F-91947 Les Ulis Cedex France (33 1) 69 82 60 60	Germany Agilent Technologies GmbH Agilent Technologies Strasse 61352 Bad Homburg v.d.H Germany (49 6172) 16-0
Great Britain Agilent Technologies Ltd. Eskdale Road, Winnersh Triangle Wokingham, Berkshire RG41 5DZ England (44 118) 9696622		
INTERCON FIELD OPERATIONS		
Headquarters Agilent Technologies 3495 Deer Creek Rd. Palo Alto, CA 94304-1316 USA (415) 857-5027	Australia Agilent Technologies Australia Ltd. 31-41 Joseph Street Blackburn, Victoria 3130 (61 3) 895-2895	Canada Agilent Technologies (Canada) Ltd. 17500 South Service Road Trans-Canada Highway Kirkland, Quebec H9J 2X8 Canada (514) 697-4232
Japan Agilent Technologies Japan, Ltd. Measurement Assistance Center 9-1, Takakura-Cho, Hachioji-Shi, Tokyo 192-8510, Japan TEL (81) -426-56-7832 FAX (81) -426-56-7840	Singapore Agilent Technologies Singapore (Pte.) Ltd. 150 Beach Road #29-00 Gateway West Singapore 0718 (65) 291-9088	Taiwan Agilent Technologies Taiwan 8th Floor, H-P Building 337 Fu Hsing North Road Taipei, Taiwan (886 2) 712-0404
China China Agilent Technologies 38 Bei San Huan X1 Road Shuang Yu Shu Hai Dian District Beijing, China (86 1) 256-6888		

Safety and Regulatory Information

Review this product and related documentation to familiarize yourself with safety markings and instructions before you operate the instrument. This product has been designed and tested in accordance with international standards.

WARNING

The **WARNING** notice denotes a hazard. It calls attention to a procedure, practice, or the like, that, if not correctly performed or adhered to, could result in personal injury. Do not proceed beyond a **WARNING** notice until the indicated conditions are fully understood and met.

CAUTION

The **CAUTION** notice denotes a hazard. It calls attention to an operating procedure, practice, or the like, which, if not correctly performed or adhered to, could result in damage to the product or loss of important data. Do not proceed beyond a **CAUTION** notice until the indicated conditions are fully understood and met.

Instrument Markings



When you see this symbol on your instrument, you should refer to the instrument's instruction manual for important information.



This symbol indicates hazardous voltages.



The laser radiation symbol is marked on products that have a laser output.



This symbol indicates that the instrument requires alternating current (ac) input.



The CE mark is a registered trademark of the European Community. If it is accompanied by a year, it indicates the year the design was proven.



The CSA mark is a registered trademark of the Canadian Standards Association.

1SM1-A

This text indicates that the instrument is an Industrial Scientific and Medical Group 1 Class A product (CISPER 11, Clause 4).



This symbol indicates that the power line switch is ON.



This symbol indicates that the power line switch is OFF or in STANDBY position.

Safety Earth Ground



This is a Safety Class I product (provided with a protective earthing terminal). An uninterruptible safety earth ground must be provided from the main power source to the product input wiring terminals, power cord, or supplied power cord set. Whenever it is likely that the protection has been impaired, the product must be made inoperative and secured against any unintended operation.

Before Applying Power

Verify that the product is configured to match the available main power source as described in the input power configuration instructions in this manual. If this product is to be powered by autotransformer, make sure the common terminal is connected to the neutral (grounded) side of the ac power supply.

Instrument Definition

This manual contains installation, operation and test information for the 8495D and 8495K.

Instruments Covered by Manual

The instruments covered by this manual have a two-part serial number. The first four digits and letter comprise the serial number prefix. The last five digits form the sequential suffix that is unique to each instrument. The contents of this manual apply to instruments with the following serial prefixes.

8495D:	1711A	2406A	2508A	2544A	2852A
8495K:	1711A	2406A	2508A	2544A	2908A

An attenuator manufactured after the printing of this manual may have a serial prefix that is not listed above. This unlisted serial prefix indicates that the attenuator is different from those documented in this manual.

Description

The Agilent 8495D and 8495K are 50-ohm, dc to 26.5 GHz, 0-70 dB (in 10 dB steps), coaxial attenuators with APC 3.5 connectors. Each attenuator is made up of four attenuation sections connected in cascade. Each section consists of a precision thin-film attenuator card, a lossless thru-line, and a ganged pair of edge line transmission lines. The edge lines are flexed to make contact with either the attenuator card or the thru-line. The edge line contacts are gold-plated leaf springs which ensure long life and high repeatability. In the 8495D, the edge line controls are flexed by low-torque cams. In the 8495K the edge line controls are flexed by solenoid plungers (see Figure 1).

Table 1 on page 3 shows the switching arrangement required to increase the amount of attenuation from 0 to 70 dB in 10 dB steps. In the 8495K, to ensure specified performance, it is recommended that the attenuator sections shown in the table below be used. Also, when changing attenuation, it is good practice to insert the required sections before deletion of the unneeded sections. With the attenuator set for 0 dB attenuation, only the insertion loss (residual attenuation) remains.

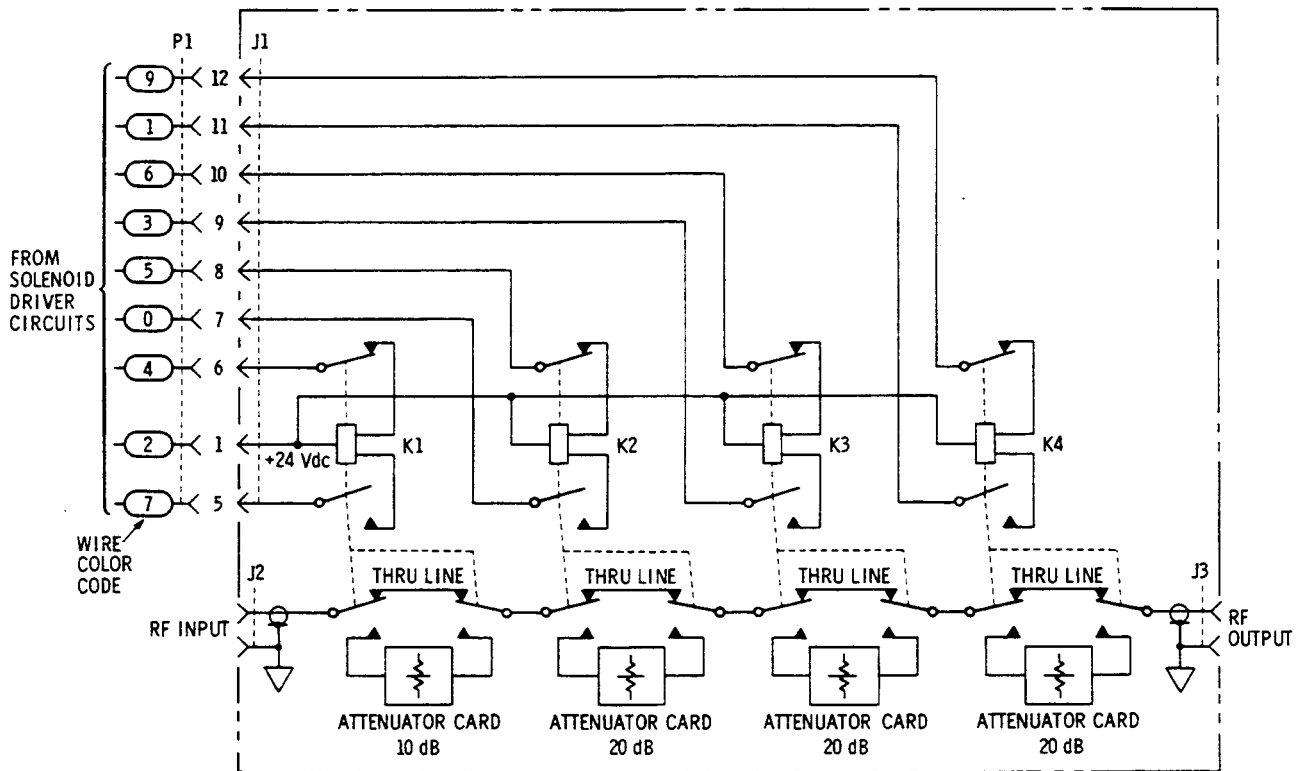


Figure 1 8495K Programmable Four-Section Attenuator Schematic Diagram

In the 8495K, each solenoid requires a drive of 20 to 30 V. The switching current is approximately 125 mA at 24 Vdc per section for the 8495K. The solenoid switching time is less than 20 milliseconds including settling time. Once switched, the solenoid plungers are held in place by permanent magnets and the solenoid plungers automatically disconnect the selected coil drive and connect the opposite coil drive (see [Figure 1 on page 2](#) and [Figure 3 on page 5](#)).

Table 1 Attenuator Switching

Attenuation (dB)	Attenuator Sections			
	1 10 dB	2 20 dB	3 20 dB	4 20 dB
10	X			
20			X*	X**
30	X		X*	X**
40		X		X
50	X	X		X
60		X	X	X
70	X	X	X	X

* D model only

** K model only

CAUTION

Do not exceed the RF power rating of 1 W average or 100 W peak with a maximum pulse width of 10 μ s. Do not connect an attenuator RF input or output connector to greater than ± 7 Vdc. If the attenuator must be connected to a device with a potential greater than ± 7 Vdc, use a blocking capacitor.

Supplied Accessories

A solenoid drive cable is supplied with the 8495K. The cable is 1.5 m (5 ft) long with a mating connector plug on one end and the other end is unterminated (see [Figure 2 on page 4](#)). The part number for this cable is 8120-2178, and is available as a spare or replacement. The cable connector plug and contacts are available from Viking Industries Inc. The part number is TKP12-100-P-TS-100-AU. The connector plug and contacts without the cable can be ordered from a Viking distributor. Information on replaceable parts is available in [Table 3 on page 4](#).

Solenoid Cable Connectors

Refer also to [Figure 2 on page 4](#).

Description

Table 2 Solenoid Cable Connectors

Section	Section 1		Section 2		Section 3		Section 4		Power
Solenoid Coil	Thru-Line	Atten Card	Thru-Line	Atten Card	Thru-Line	Atten Card	Thru-Line	Atten Card	V+
Cable Wire Color Code ¹	VIO	YEL	BLK	GRN	ORG	BLU	BRN	WHT	RED
Connector Plug Pin Number ²	5	6	7	8	9	10	11	12	1
8495K	0dB	10 dB	0 dB	20 dB	0 dB	20 dB	0 dB	20 dB	–
Option 008/016 Flat Pack Plug Pin Number ³	13	2	11	5	3	9	4	10	6

1. Five-foot cable and mating plug assembly provided.
2. Pin 1 (red wire) is common for all coils. Pins 2, 3 and 4 are not used.
3. Pin 6 is common for all coils. Pins 1, 7, 8, 12, and 14 are not used.

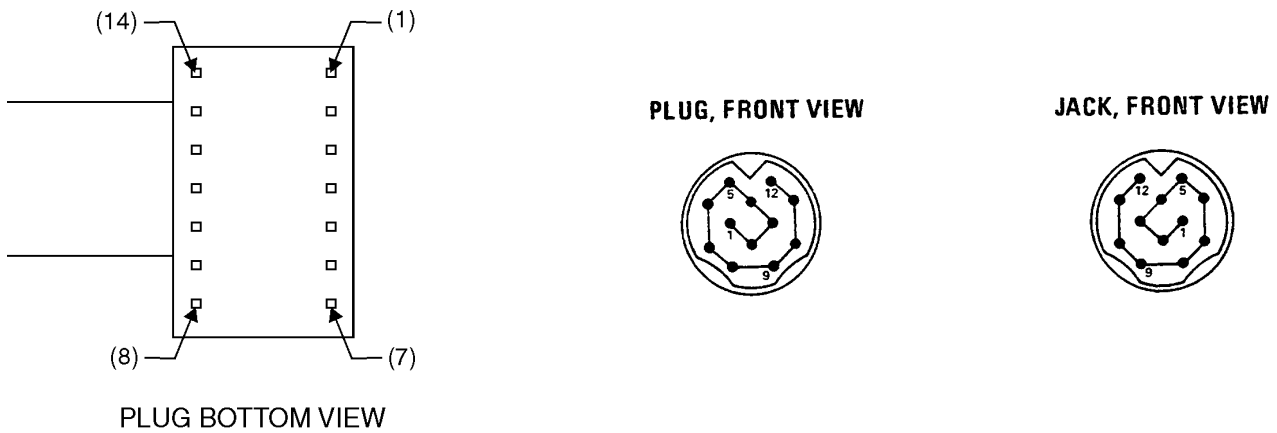
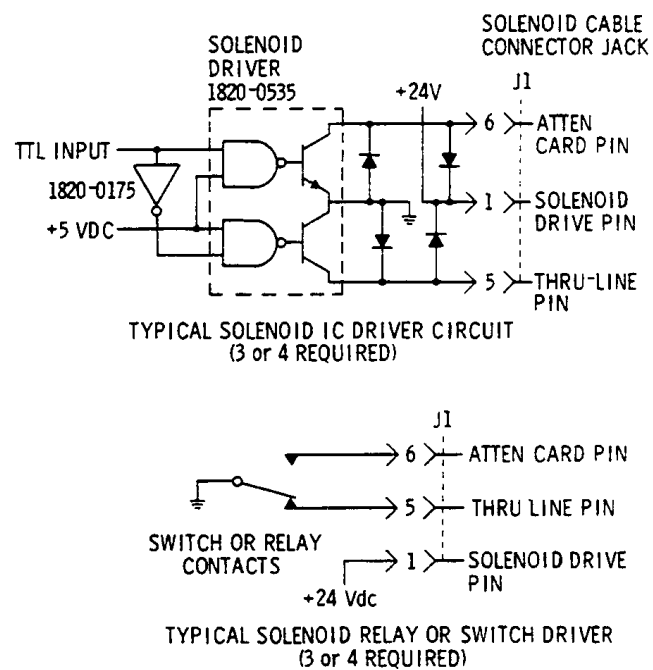


Figure 2 Solenoid Cable Pin Configuration

Table 3 Solenoid Cable Replaceable Parts

Part Number	Description
2220-0006	Screw, fillister Head 4-40x7/8 in. (for attaching base)
8120-2178	Cable, solenoid drive, 1.5 meters (5 feet) long, connector plug on one end and other end unterminated (8495K)
0370-1091	Knob (84950)
08496-20008	Base
TKP12-100-P-TS-100-AU ¹	Connector Plug and Contacts only without cable (8495K)

1. Available from Viking Industries, Inc., Chatsworth, California 91311.

**Figure 3 Typical Solenoid Coil Driver Circuit**

Specifications

Frequency Range and Attenuation

Frequency Range	dc to 26.5 GHz
Attenuation	0 to 70 dB in 10 dB steps

Attenuation Accuracy

Attenuation Accuracy (\pm dB, referenced from 0 dB)				
Attenuation Selection (dB)	dc–6.0 GHz	6.0–12.4 GHz	12.4–18.0 GHz	18.0–26.5 GHz
10	0.3	0.4	0.5	0.7
20	0.5	0.5	0.6	0.8
30	0.6	0.7	0.8	1.0
40	0.7	0.9	1.1	1.5
50	0.8	1.0	1.2	1.6
60	1.0	1.3	1.4	1.9
70	1.1	1.5	1.7	2.3

Maximum Insertion Loss $(0.4 + 0.9f)$ dB
 where “f” is the frequency in GHz

Attenuation Repeatability 0.01 dB, dc to 18.0 GHz
 0.05 dB, 18.0 to 26.5 GHz

RF Power Handling Capability 1 W average, 100 W peak with maximum pulse width of 10 microseconds.

Solenoid Drive For Agilent 8495K only.

Solenoids Drive	Coil Voltage	Switching Current
8495K	20 to 30 Vdc	125 mA at 24V (approx.)

Switching speed Maximum 20 milliseconds including settling time

Maximum SWR

Instrument	Frequency Range (GHz)	Maximum SWR
8495D, 8495K	dc to 6.0	1.25
	6.0 to 12.4	1.45
	12.4 to 18	1.9
	18 to 26.5	2.2

Physical Characteristics

Instrument	Dimensions ¹ (depth x width x height)	Weight
8495D	6.25 in x 2.0625 in x 1.6875 in	15 oz
	159 mm x 52 mm x 43 mm	425 g
8495K	5.625 in x 2.0625 in x 1.6875 in	16 oz
	159 mm x 52 mm x 43 mm	454g

1. Dimensions are in millimeters and inches. Dimensions are for general information only. If dimensions are required for building special enclosures, contact your Agilent field engineer.

Minimum Life

>5 million cycles per section

Environment Limits

The attenuator should be stored in a clean, dry environment. The storage and operating environments of the instruments should be within the following limits.

Characteristic	Storage Value	Operating Value
Temperature	-40 to +75 °C	0 to 55 °C
Humidity	< 95% relative	< 95% relative
Altitude	< 7600 m (25000 ft)	< 4600 m (15000 ft)

NOTE

Containers and materials identical to those used in factory packaging are available through Agilent Technologies offices. If the instrument is being returned to Agilent Technologies for servicing, attach a tag indicating the type of service required, return address, model number, and full serial number. Also, mark the container *FRAGILE* to assure careful handling. In any correspondence, refer to the instrument by model number and full serial number.

Installation

Initial Inspection

Inspect the shipping container for damage. If the shipping container or cushioning material is damaged, it should be kept until the contents of the shipment have been checked for completeness and the instrument has been checked mechanically and electrically. A procedure for checking electrical performance is given under “[Operator’s Check](#)” on page 10 (also see “[Performance Tests](#)” on page 11). If the contents of the shipment are incomplete, if there is mechanical damage or defect, or if the instrument does not pass the electrical performance test, notify the nearest Agilent Technologies office. If the shipping container is damaged, or the cushioning material shows signs of stress, notify the carrier as well as the Agilent Technologies office. Keep the shipping materials for the carrier's inspection. The Agilent office will arrange for repair or replacement without waiting for claim settlement.

Mating Connectors

The APC 3.5 connector is a 3.5 mm air line connector that will mate with the SMA type connectors. The SWR performance of this hybrid connection is similar to a mated pair of SMA connectors when used within the frequency range of the SMA connector.

Option

The attenuators are configured with the APC 3.5 female connectors and are designated as Option 004.

CAUTION

When installing the instrument, make sure that the connectors do not support weight or bear torque. The preferred procedure is to set up all equipment in position before connecting the instrument. Either connector may be used as the input or output connector.

Installation Instructions

The 8495K solenoid drive cable connector plug is connected by aligning the plug (P1) with the jack (J1) on the attenuator, and then pushing the plug over the jack. The plug is removed by grasping the ribbed sides of the plug and squeezing them together while pulling back until the plug clears the jack.

Operating Instructions

CAUTION

Do not apply power greater than 1 W average, or 100 W peak with a maximum pulse width of 10 microseconds. If these limits are exceeded, the attenuators may be damaged.

CAUTION

For the 8495K, do not ground both solenoid drive pins of the programmable attenuator at the same time. This causes rapid cycling of the solenoid and could reduce the operating life of the attenuator. The rapid cycling may produce a buzzing sound from the attenuator.

Operating Information

Either RF connector may be used as the input or output connector. Connect the solenoid drive cable of the programmable attenuator to the solenoid drive connector (J1). By applying the proper voltage and grounds to the proper pins of J1, the attenuator will either increase or decrease the amount of attenuation as selected.

Operator's Check

The Operator's Check is supplied to allow the operator to make a quick check of the instrument prior to use or if a failure is suspected.

Description

The attenuator is driven from a 50-ohm signal source at 1 kHz. The output level from the attenuator is detected by a narrow-bandwidth voltmeter. The attenuator and detector range switches are stepped together and the variations in level noted. This verifies that each attenuator section is being properly switched and checks the low-frequency accuracy of the attenuator.

NOTE

The SWR meter used in this check is calibrated for a square-law detector and therefore the range changes and errors (read in dB) are twice that indicated by the meter.

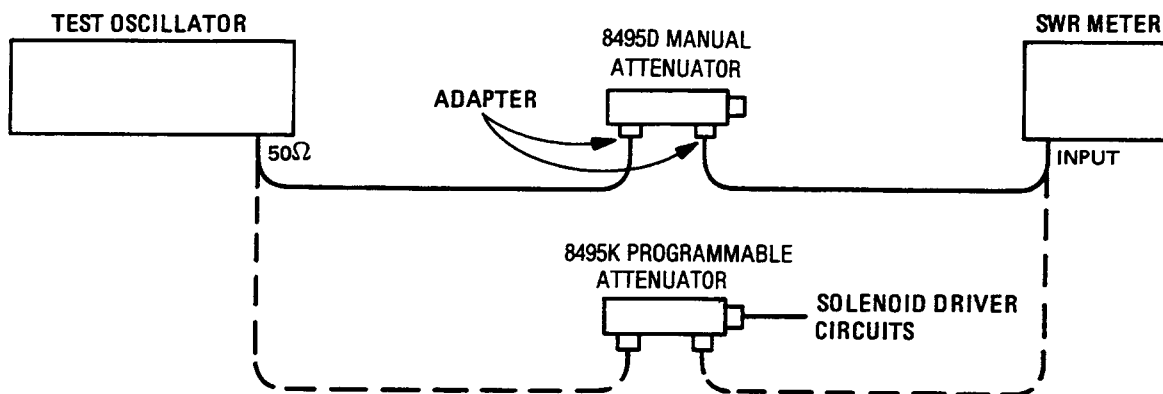


Figure 4 Operator Check Setup

Procedure

1. Connect equipment as shown in [Figure 4](#) with the attenuator set to 0 dB.
2. Set the test oscillator to 0.3 Vrms at 1 kHz.
3. Set SWR meter range to 2 dB (expanded) and adjust its bandwidth to center of adjustment range. Fine tune oscillator frequency to obtain maximum meter indication.
4. Set attenuator and SWR meter range switch as shown in [Table 4](#) and verify that SWR meter indicates within the limits shown.

Table 4 Attenuator and SWR Settings

SWR Meter Range (dB)	Attenuation	Meter Indication (dB)		
	8495D/K	Minimum	Actual	Maximum
2	0		Set to 0.5	
6	10	1.20		1.80
12	20	0.15		0.85
16	30	1.05		1.95
22 ¹	40	-0.40		1.40
26 ¹	50	0.50		2.50
32 ¹	60	-0.60		1.60
36 ¹	70	0.35		2.65

1. Adjust range by 2 dB, if needed, to obtain a on-scale indication.

Performance Tests

The attenuator can be tested to the accuracy of the [Specifications on page 6](#) with an automatic network analyzer or equivalent equipment of suitable accuracy. If an automatic network analyzer is available, test the attenuator using the procedures in the analyzer's operating manual.

Refer to the *Agilent 11713A Attenuator/Switch Driver Operating and Service Manual* for programming instructions.

NOTE

The attenuators have no internal adjustments and should not be opened. If defective, return the attenuator to the nearest Agilent Technologies office for repair.

Replaceable Parts

Table 5 lists the replaceable parts which are the only parts that can be replaced without access to the interior of the instrument. If any parts not listed below need replacement, return the instrument to Agilent Technologies.

CAUTION

Due to special fixtures necessary for assembly, do NOT attempt to replace any parts not listed in the table below. If the instrument is opened, the warranty is void.

Table 5 *Replaceable Parts*

Description	Part Number
Knob (8495D)	0370-1091
Cable, solenoid drive, 1.5 m (5 ft) long, connector plug on one end and other end un-terminated (8495K)	8120-2178
Screws for both bases: 4-40 x 7/8 in. Fillister head	2220-0006
Base	5041-3888
Connector plug and contacts only without cable (8495K)	*TKP12-100-P-TS-100-AU

*Available from distributors of Viking Industries, Inc., Chatsworth CA 91311

Troubleshooting

Troubleshooting consists of performing the “[Operator’s Check](#)” on page 10. If the instrument does not perform within limits, return the instrument to Agilent Technologies.